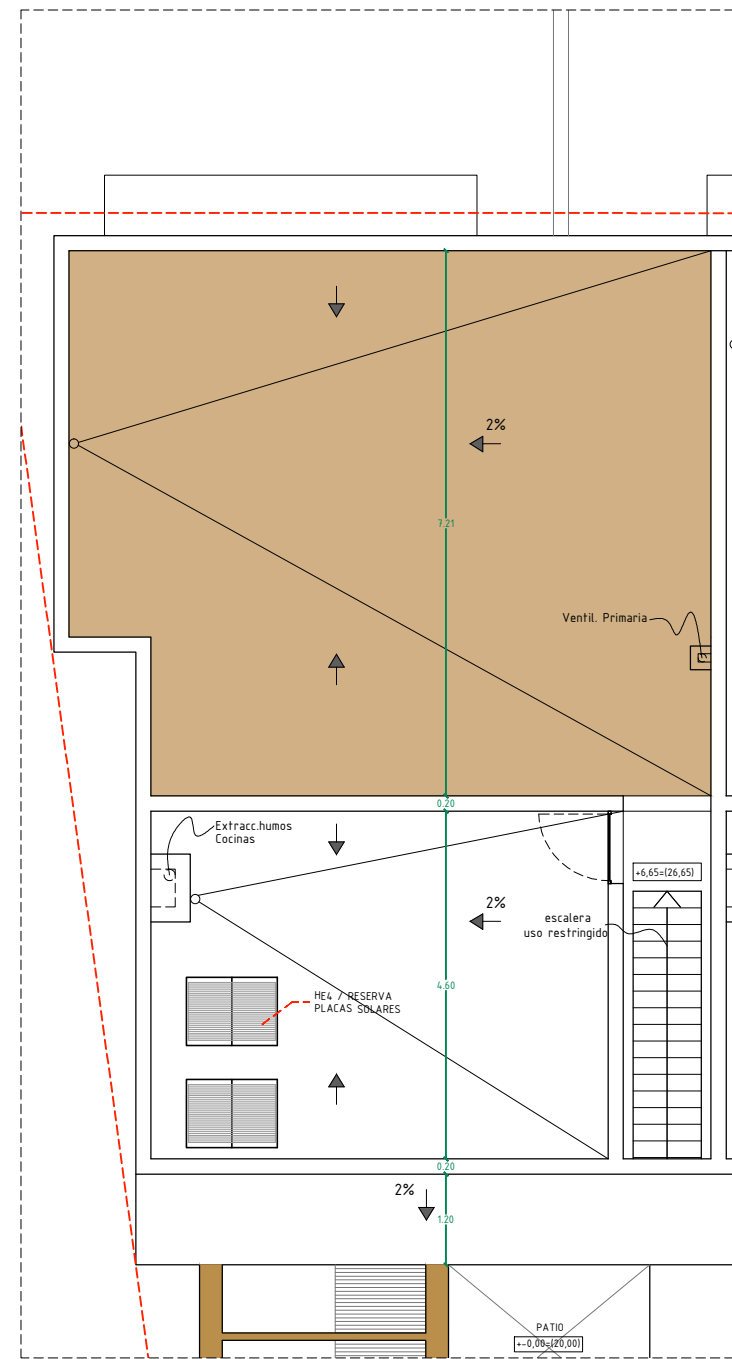
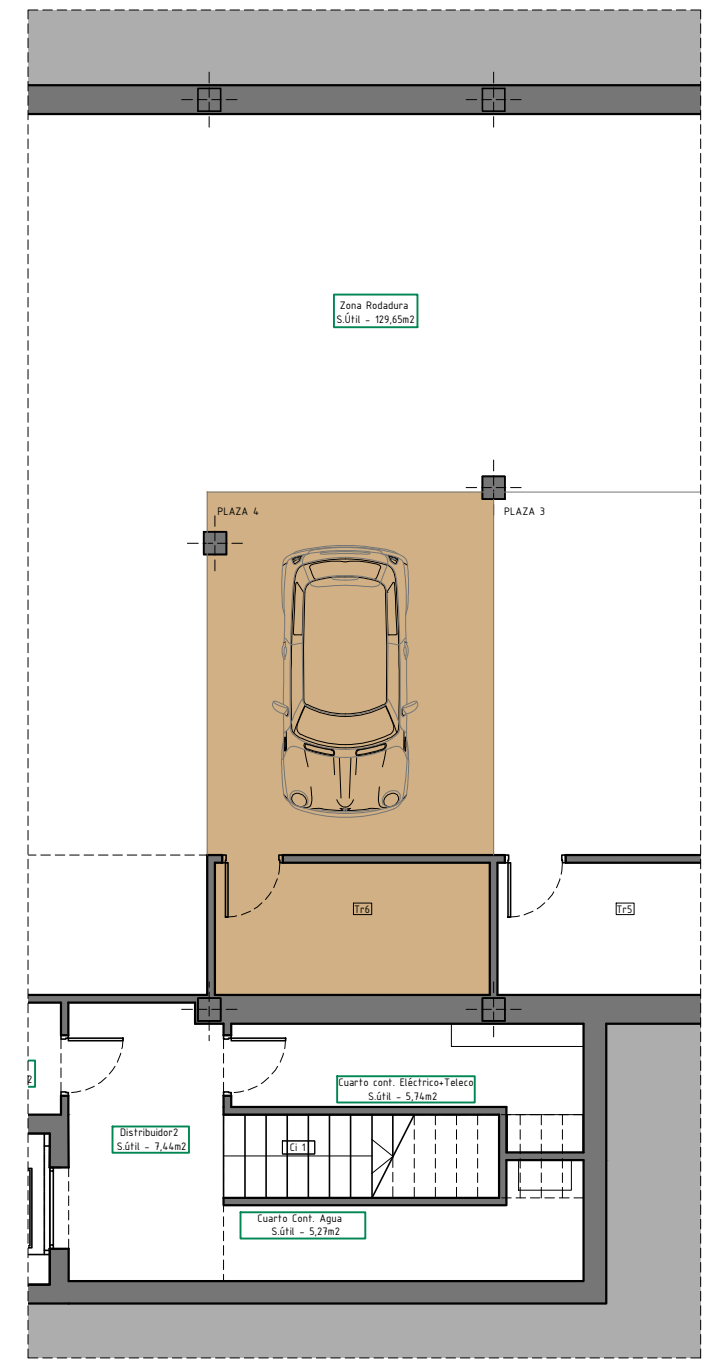




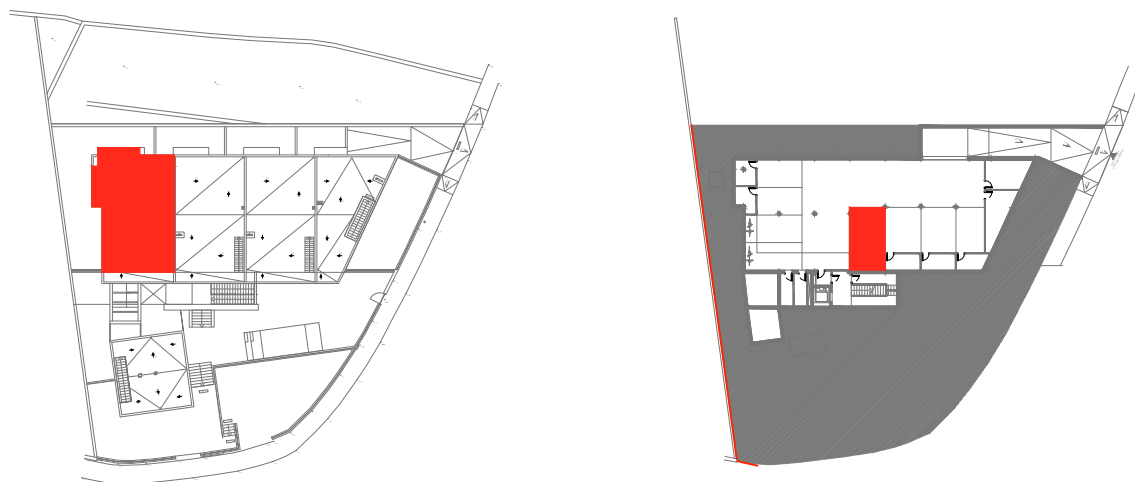
P. Piso



P. Cubierta



P. Sótano



VIVIENDA 2º C		4 PLAZAS HABITABLES
TOTAL SUP. ÚTIL VIVIENDA	69,67 m2	
TOTAL SUP. CONSTRUIDA	100,19 m2	
Sup. Terraza-Lavadero (sur)	9,45 m2	
Sup. Terraza- Balcón (Norte)	6,01 m2	
Sup. Terraza- Cubierta	58,94 m2	
Aparcamiento PLAZA 4	18,18 m2	
Trastero Tr 6	6,37 m2	
SCC (aparc.+trastero+comunes)	154,30 m2	