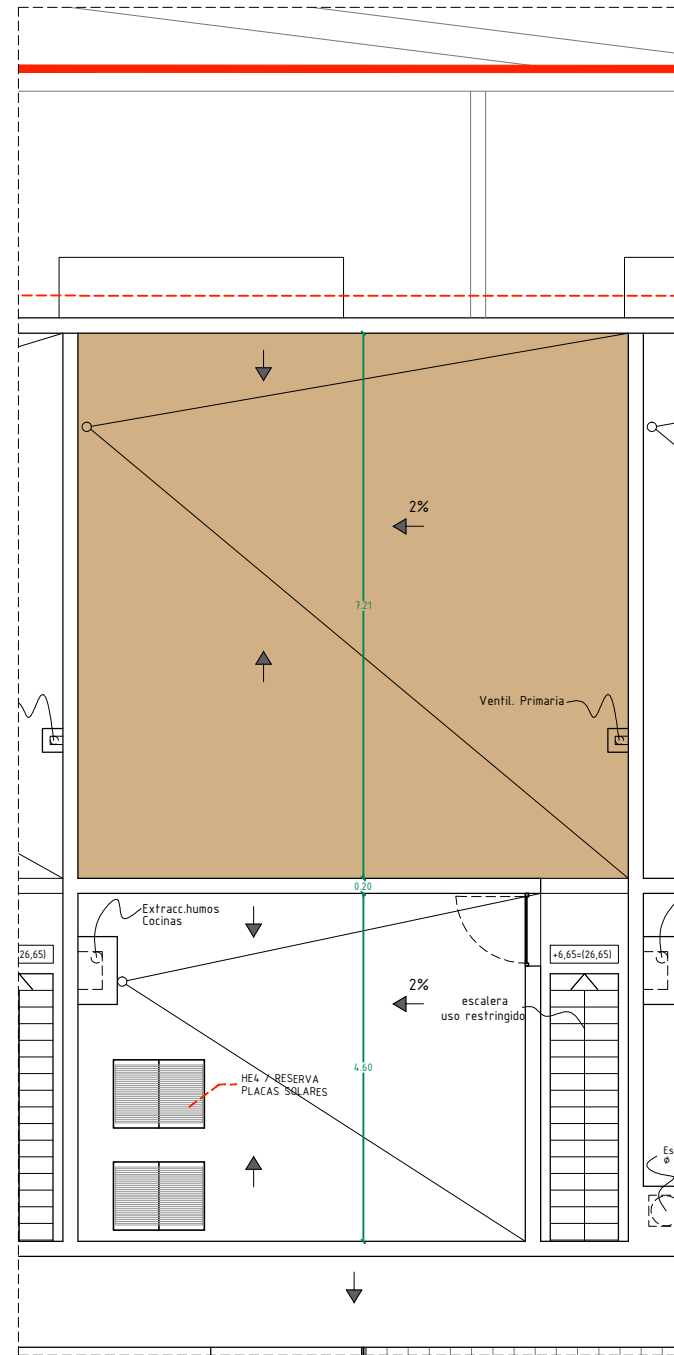
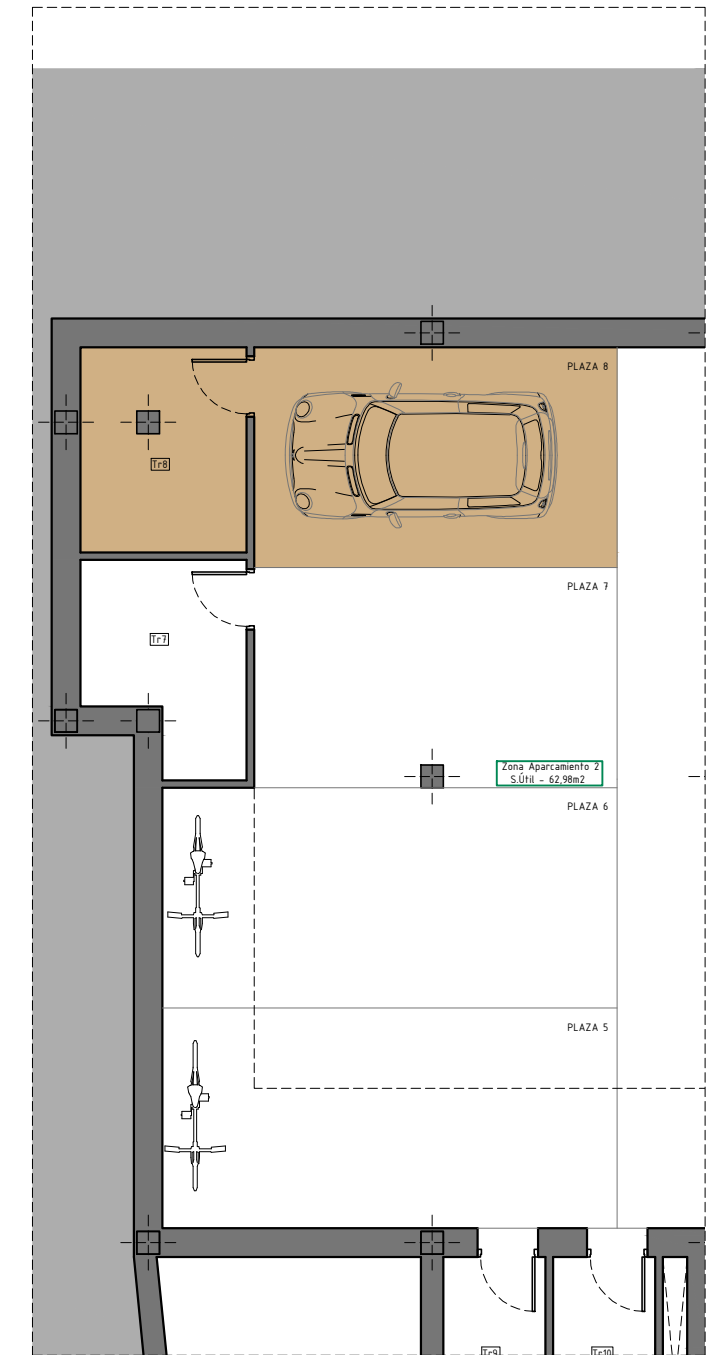


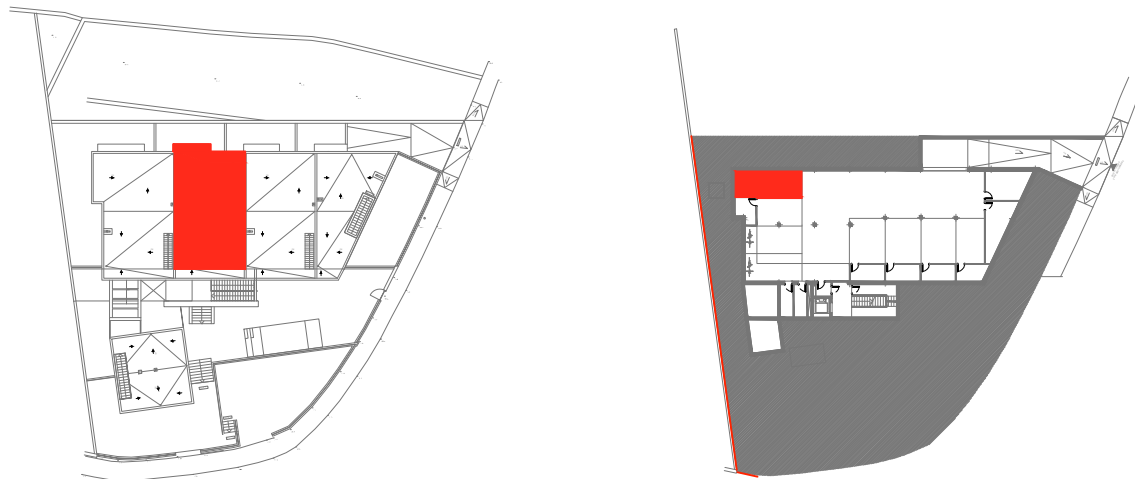
P. Piso



P. Cubierta



P. Sótano



VIVIENDA 2º B		
TOTAL SUP. ÚTIL VIVIENDA	65,79 m2	4 PLAZAS HABITABLES
TOTAL SUP. CONSTRUIDA	92,42 m2	
Sup. Terraza-Lavadero (sur)	9,45 m2	
Sup. Terraza- Balcón (Norte)	4,92 m2	
Sup. Terraza- Cubierta	52,45 m2	
Aparcamiento PLAZA 8	13,98 m2	
Trastero Tr 8	5,96 m2	
SCC (aparc.+trastero+comunes)	138,99 m2	