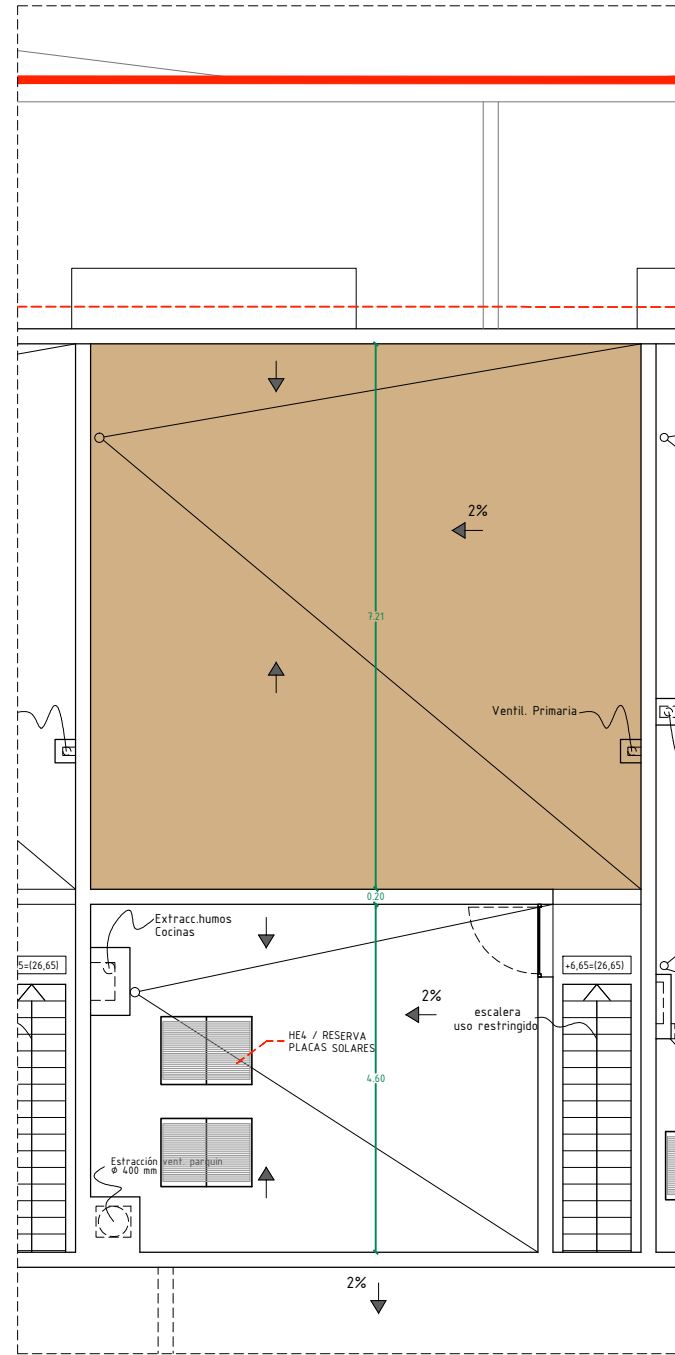
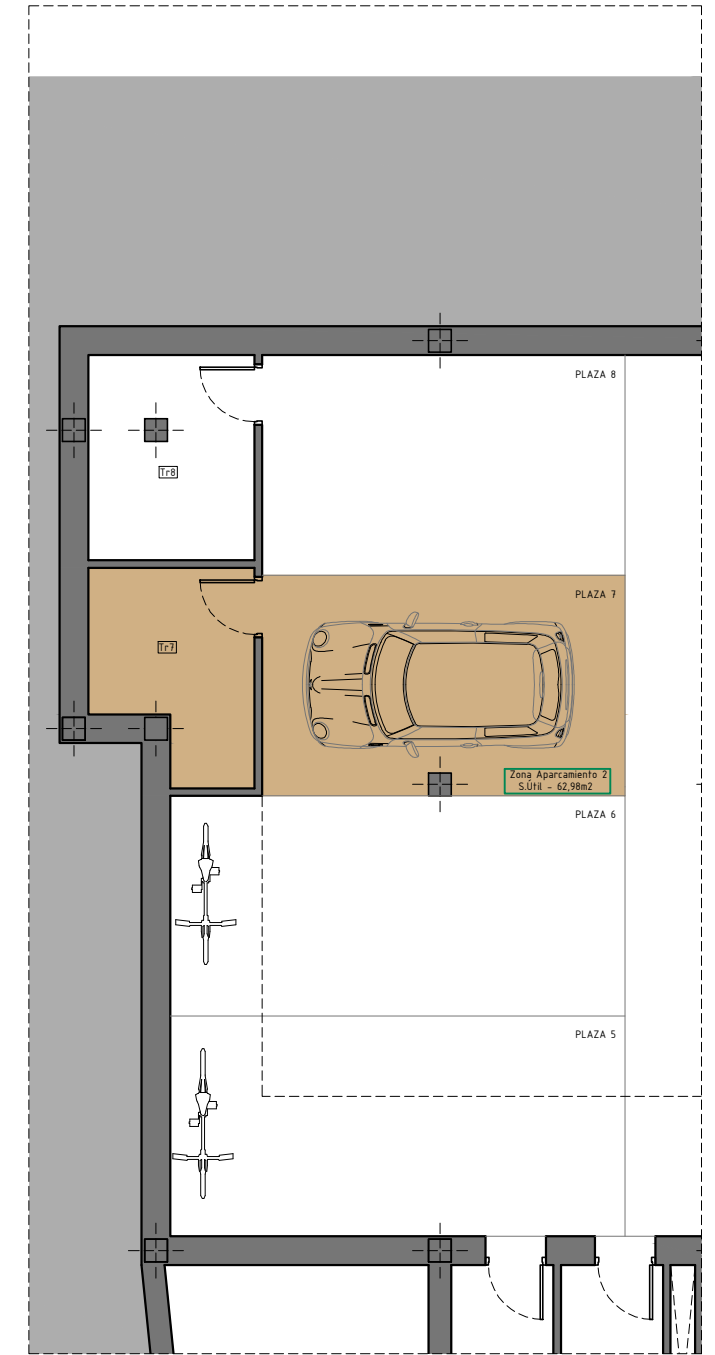


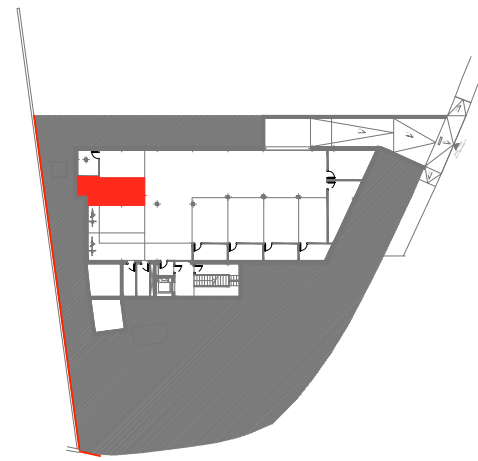
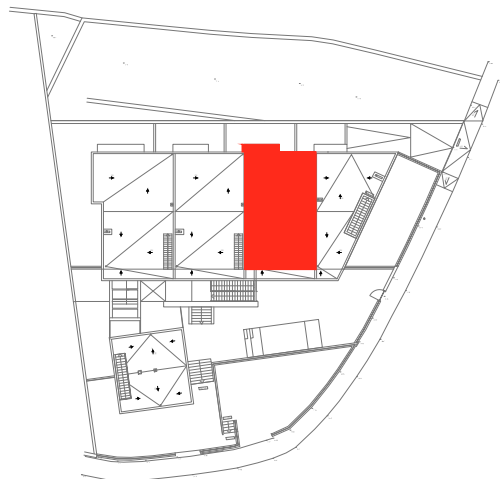
P. Piso



P. Cubierta



P. Sótano



VIVIENDA 2º A		
TOTAL SUP. ÚTIL VIVIENDA	65,79 m2	4 PLAZAS HABITABLES
TOTAL SUP. CONSTRUIDA	92,42 m2	
Sup. Terraza-Lavadero (sur)	9,45 m2	
Sup. Terraza- Balcón (Norte)	4,92 m2	
Sup. Terraza- Cubierta	52,45 m2	
Aparcamiento PLAZA 7	13,98 m2	
Trastero Tr 7	5,35 m2	
SCC (aparc.+trastero+comunes)	138,23 m2	