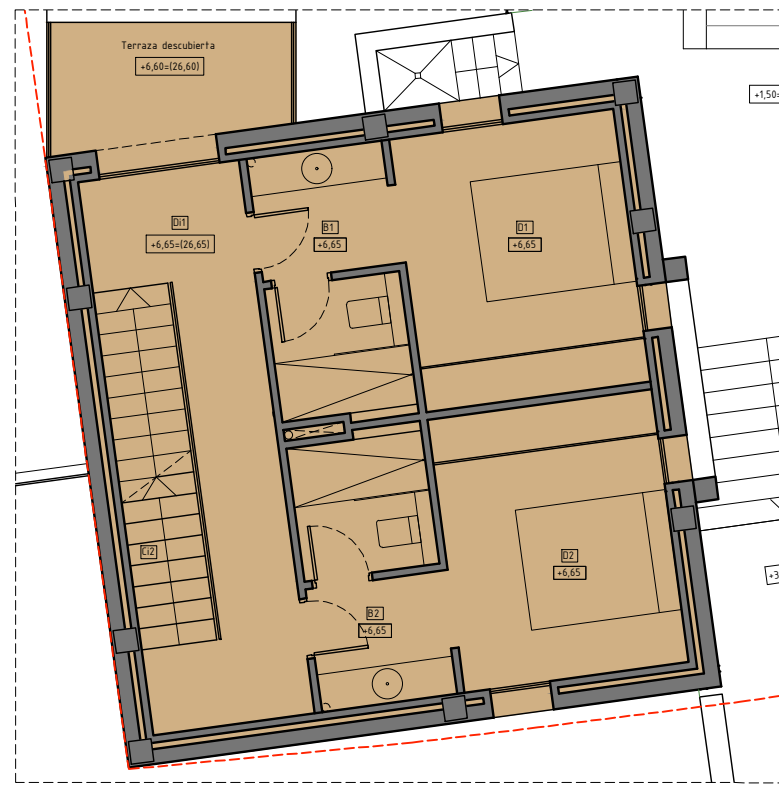
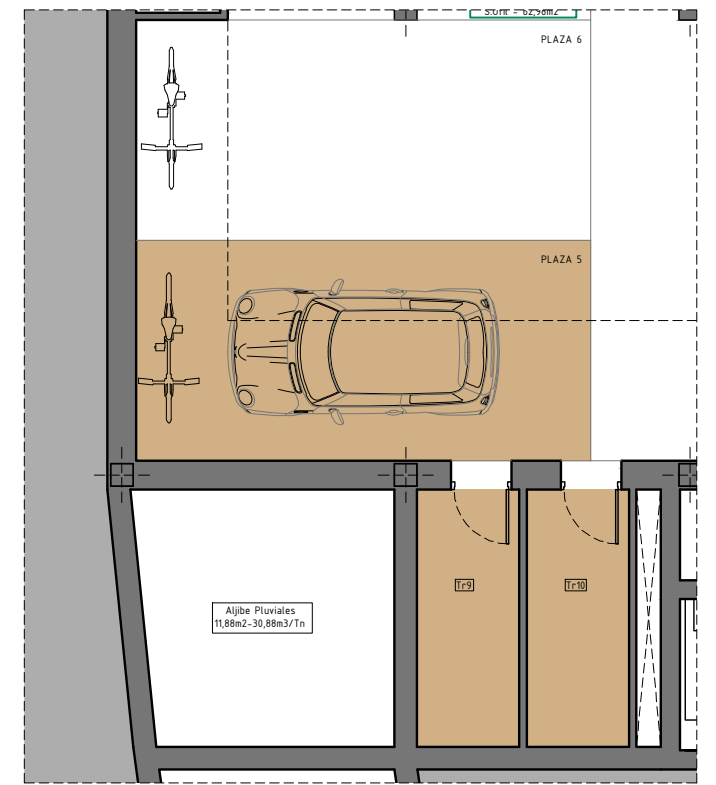


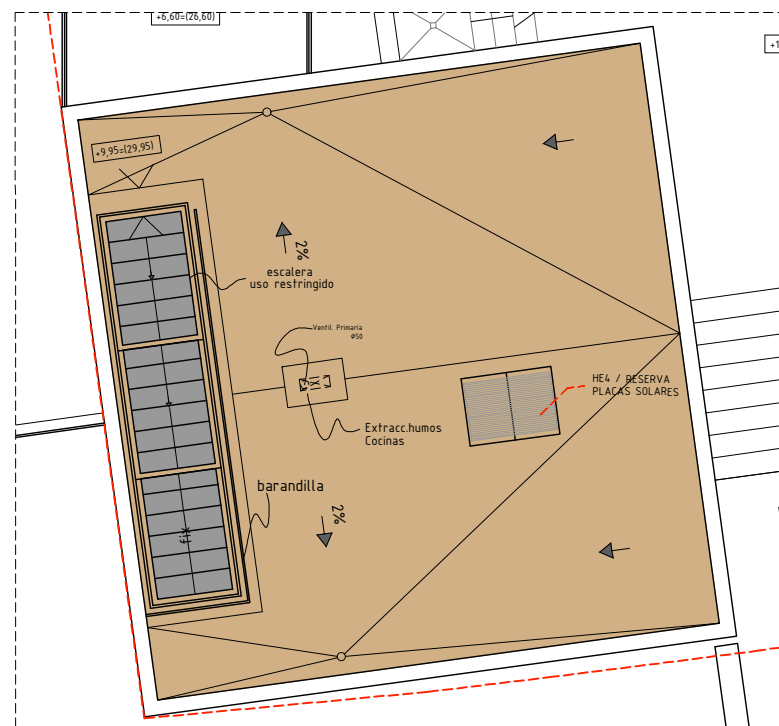
P. Baja



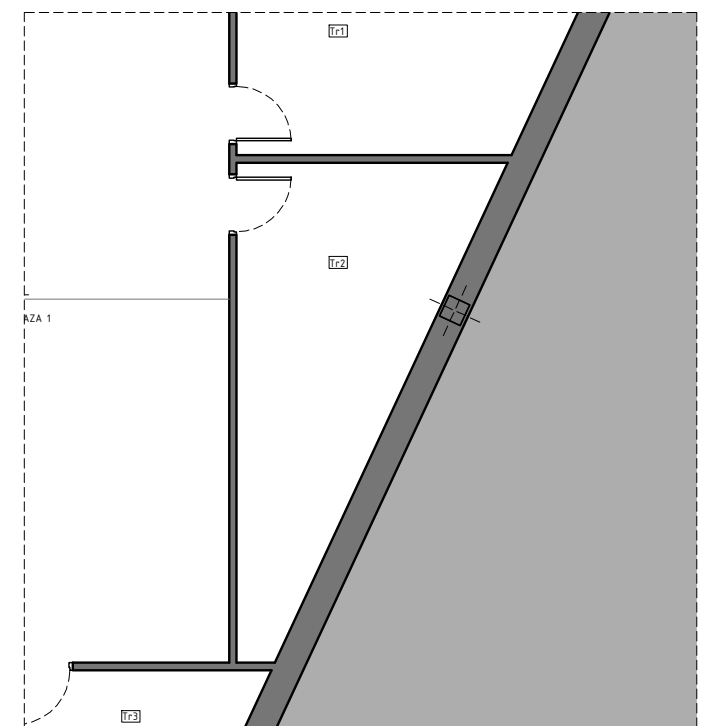
P. Piso



P. Sótano



P. Cubierta



VIVIENDA 1º E	
TOTAL SUP. ÚTIL VIVIENDA	94,09 m2
TOTAL SUP. CONSTRUIDA	128,16 m2
Sup. Terraza PB (Norte)	10,90 m2
Sup. Terraza- Jardín PB (Este)	67,82 m2
Sup. Terraza- Balcón PP (Norte)	5,13 m2
Sup. Terraza- Cubierta	58,02 m2
Aparcamiento PLAZA 5	17,51 m2
Trastero Tr 9	4,59 m2
Trastero Tr 10	4,59 m2
SCC (aparc.+trastero+comunes)	191,55 m2

4 PLAZAS HABITABLES

Din A3

