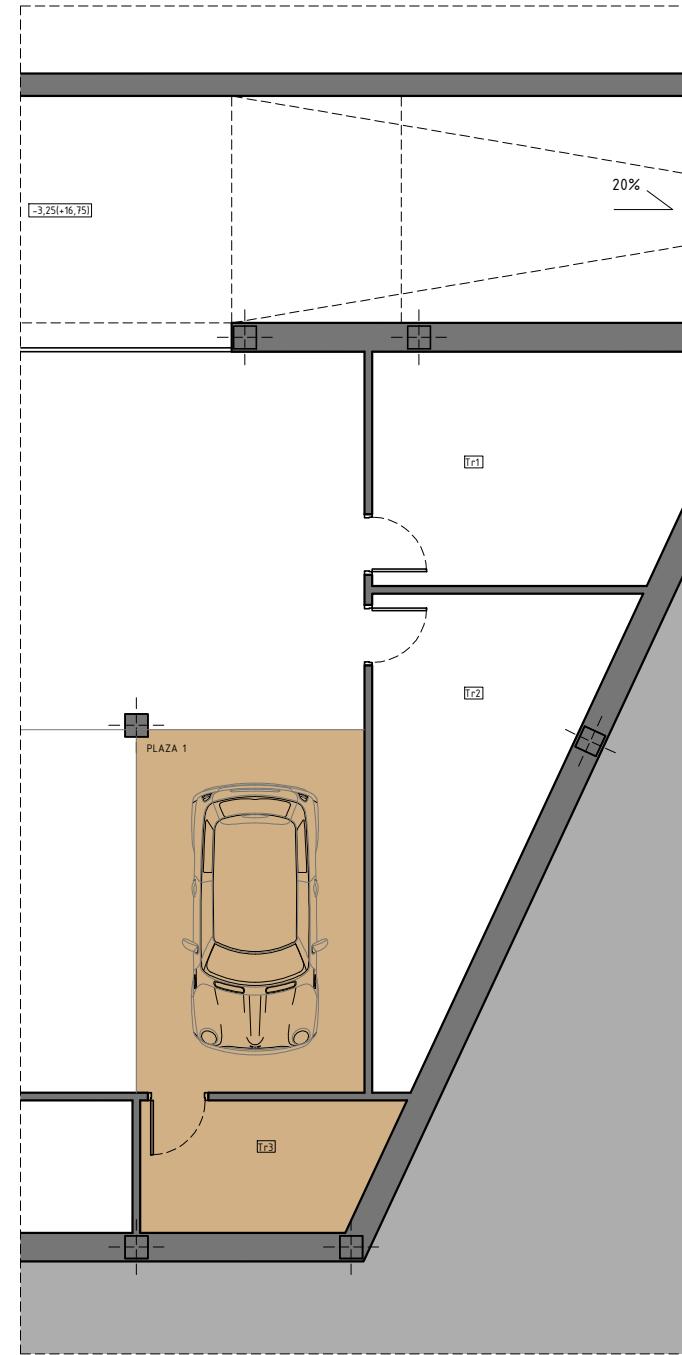
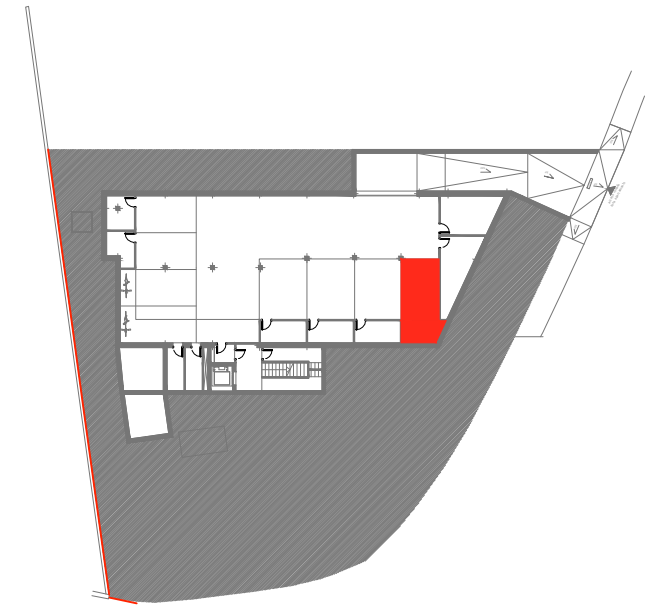


P. Baja



P. Sótano



VIVIENDA 19 D		
TOTAL SUP. ÚTIL VIVIENDA	69,67 m2	4 PLAZAS HABITABLES
TOTAL SUP. CONSTRUIDA	100,19 m2	
Sup. Terraza-Lavadero (sur)	9,45 m2	
Sup. Terraza- Jardín (Norte)	4,184 m2	
Aparcamiento PLAZA 1	14,48 m2	
Trastero Tr 3	5,46 m2	
SCC (aparc.+trastero+comunes)	148,60 m2	