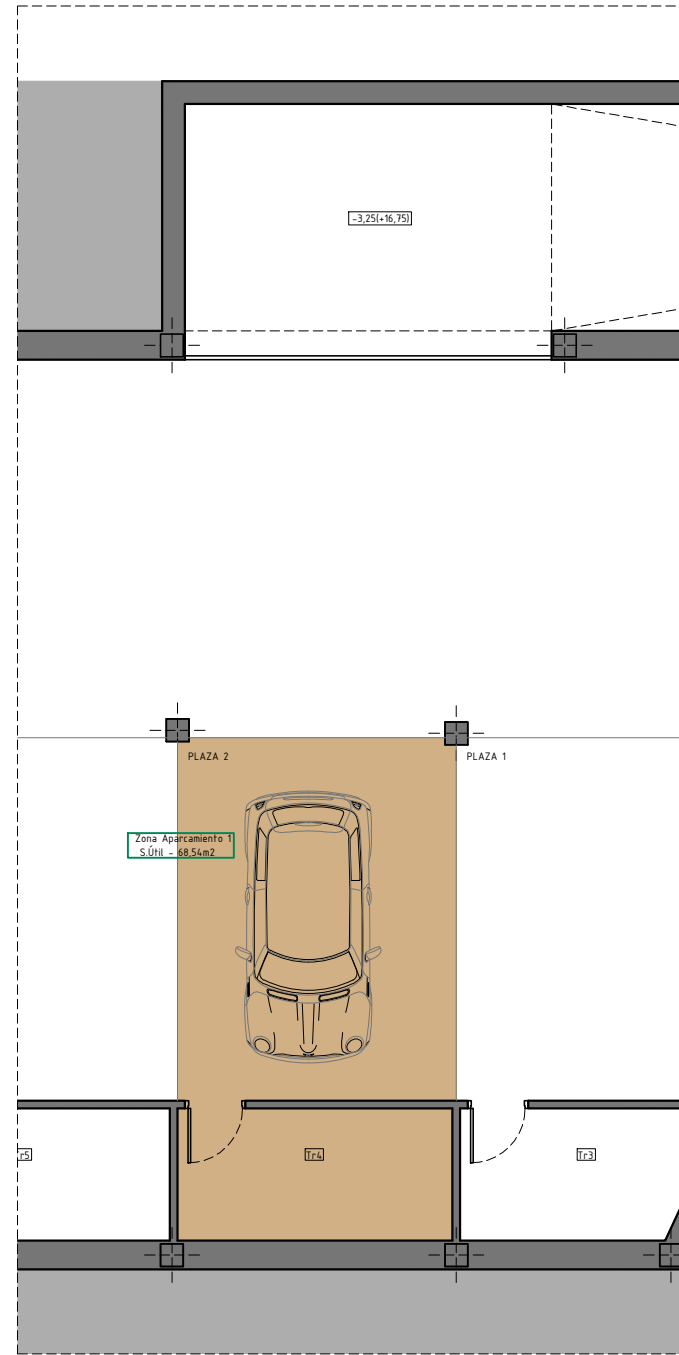
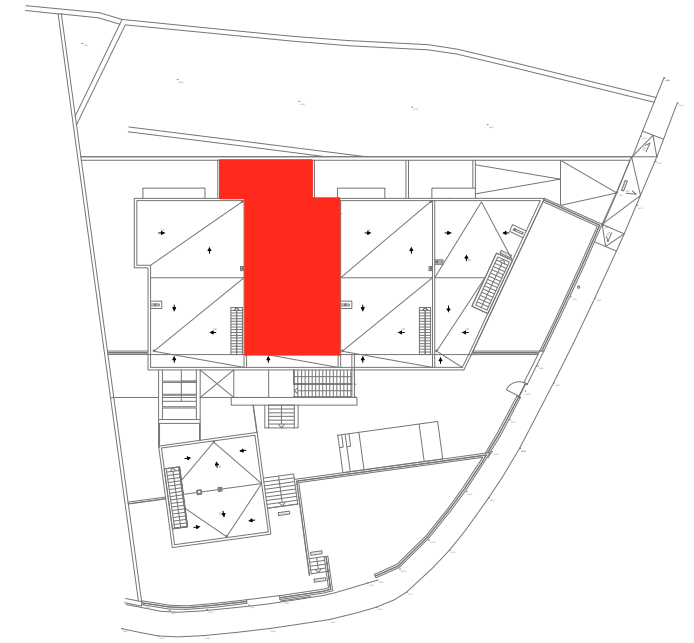


P. Baja



P. Sótano



VIVIENDA 10 C		4 PLAZAS HABITABLES
TOTAL SUP. ÚTIL VIVIENDA	65,79 m2	
TOTAL SUP. CONSTRUIDA	92,42 m2	
Sup. Terraza-Lavadero (sur)	9,45 m2	
Sup. Terraza (Norte)	25,68 m2	
Aparcamiento PLAZA 2	17,69 m2	
Trastero Tr 4	6,37 m2	
SCC (aparc.+trastero+comunes)	144,08 m2	