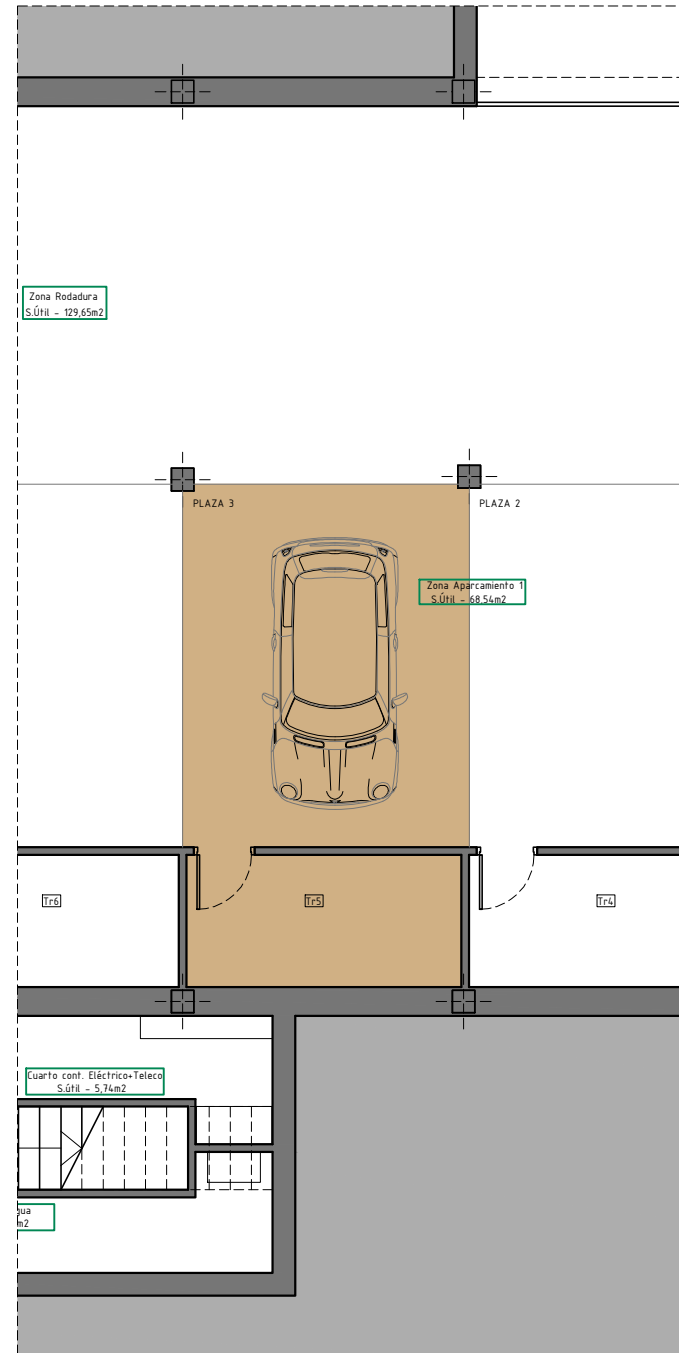
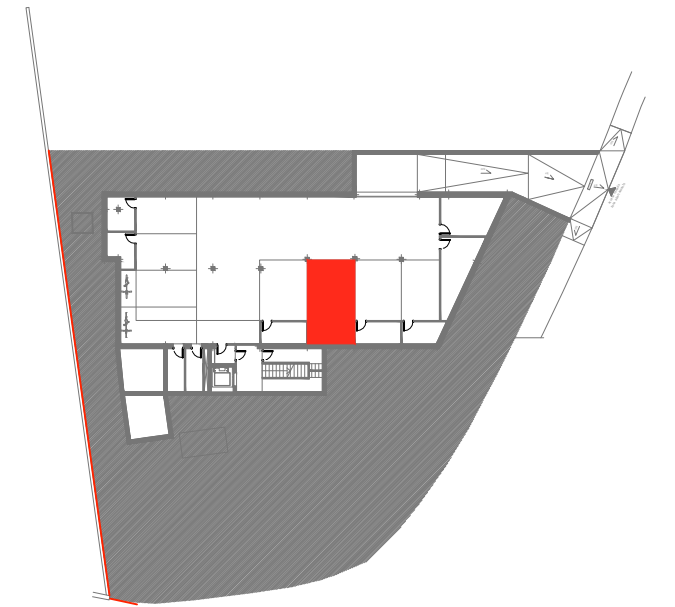
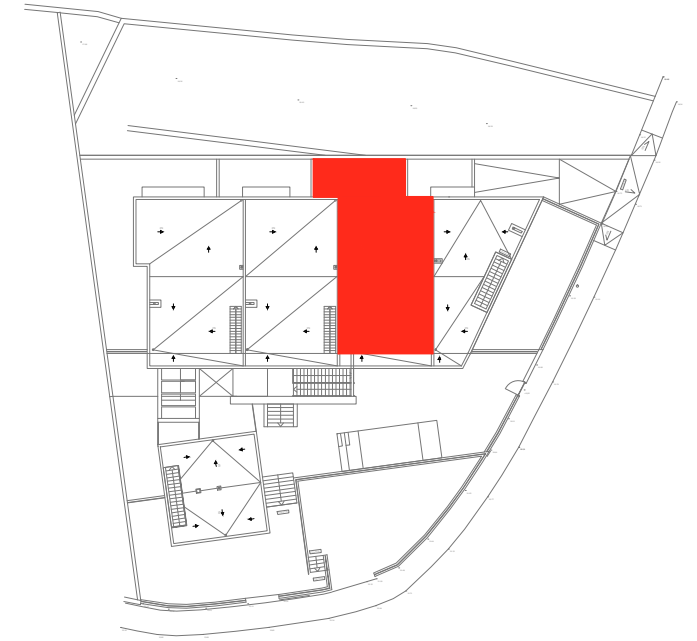


P. Baja



P. Sótano



VIVIENDA 1º B		4 PLAZAS HABITABLES
TOTAL SUP. ÚTIL VIVIENDA	65,79 m <sup>2</sup>	
TOTAL SUP. CONSTRUIDA	92,42 m <sup>2</sup>	
Sup. Terraza-Lavadero (sur)	9,45 m <sup>2</sup>	
Sup. Terraza (Norte)	25,68 m <sup>2</sup>	
Aparcamiento PLAZA 3	18,19 m <sup>2</sup>	
Trastero Tr 5	6,37 m <sup>2</sup>	
SCC (aparc.+trastero+comunes)	144,33 m <sup>2</sup>	