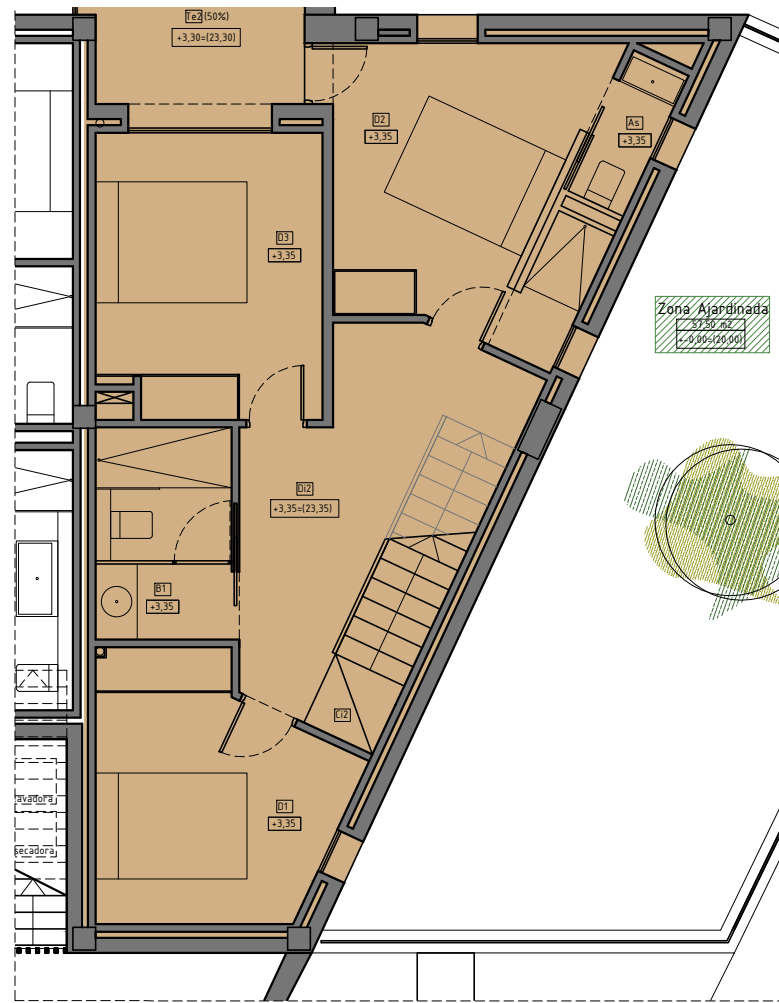
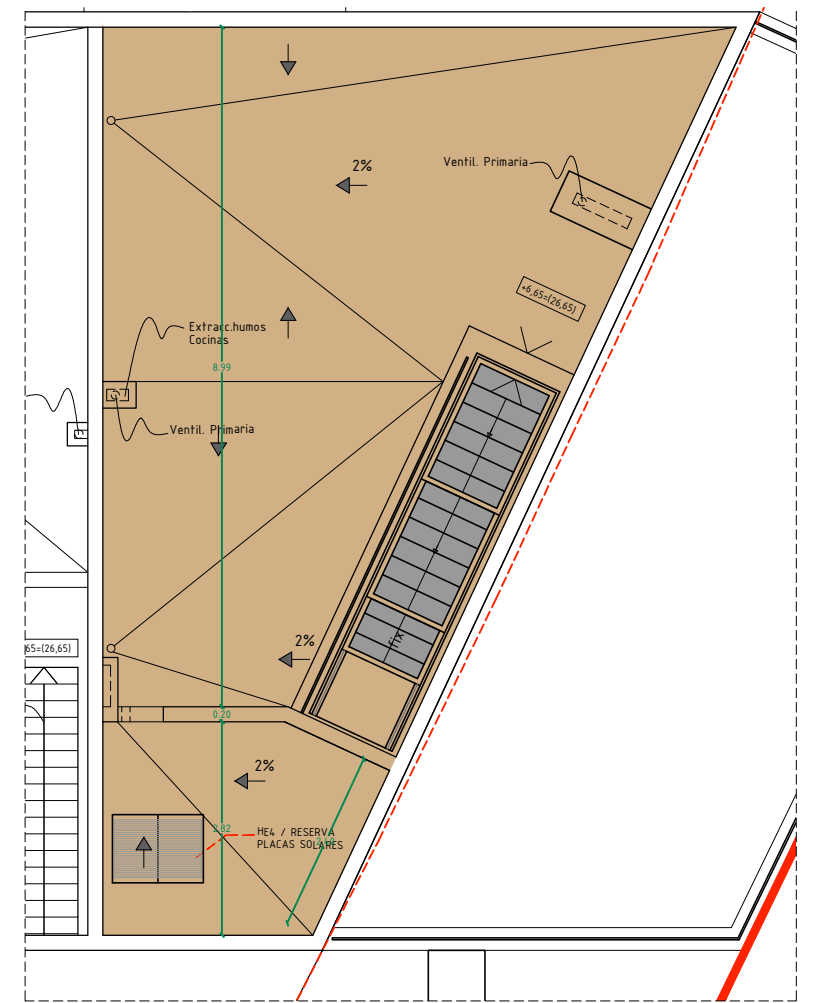


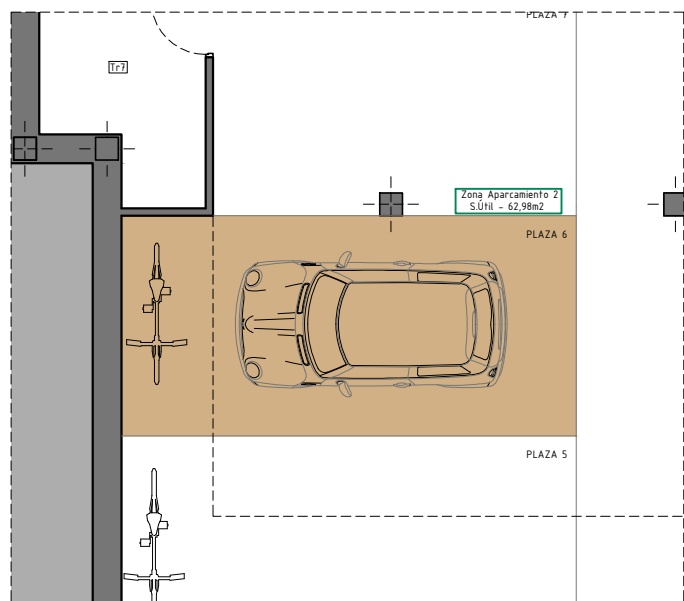
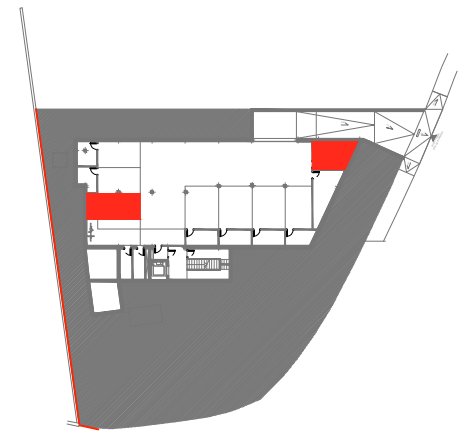
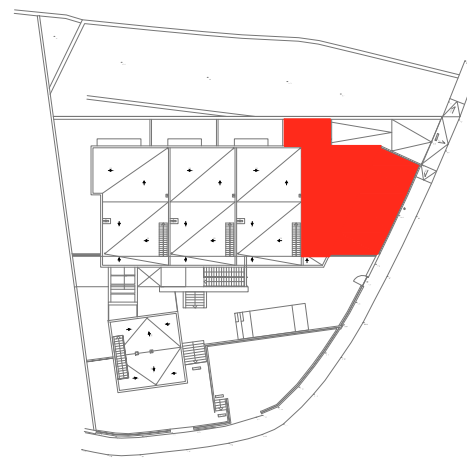
P. Baja



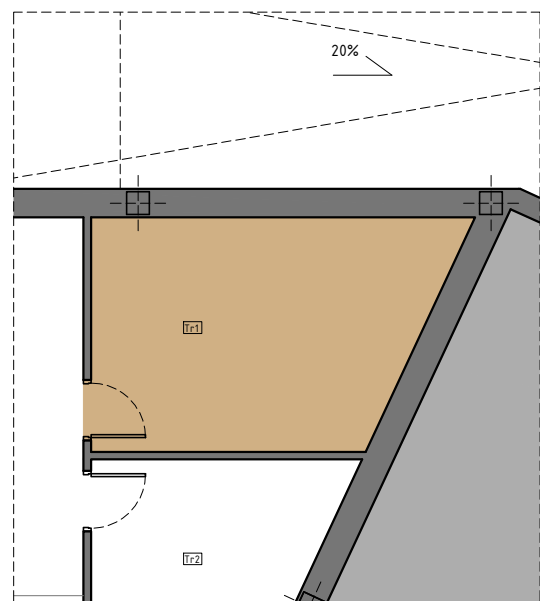
P. Piso



P. Cubierta



P. Sótano



VIVIENDA 1º A		6 PLAZAS HABITABLES
TOTAL SUP. ÚTIL VIVIENDA	113,82 m ²	
TOTAL SUP. CONSTRUIDA	145,88 m ²	
Sup. Terraza PB (Norte)	18,57 m ²	
Sup. Terraza- Jardín PB (Este)	57,47 m ²	
Sup. Terraza- Balcón PP (Norte)	4,16 m ²	
Sup. Terraza- Cubierta	66,98 m ²	
Aparcamiento PLAZA 6	17,51 m ²	
Trastero Tr 1	13,49 m ²	
SCC (aparc.+trastero+comunes)	218,80 m ²	