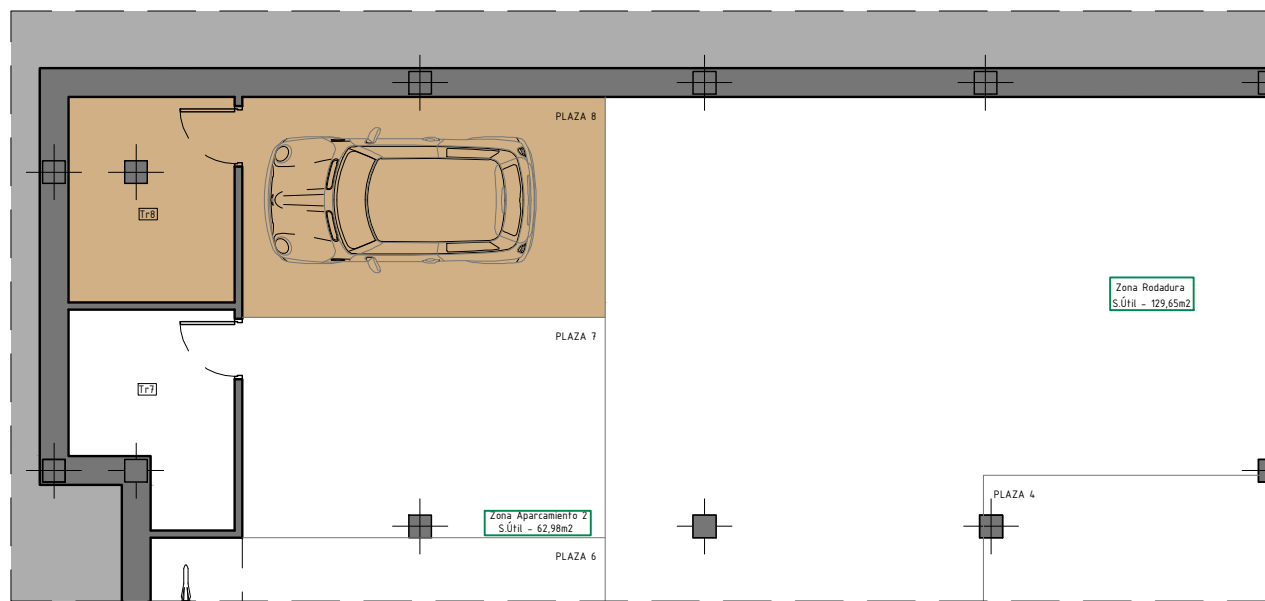
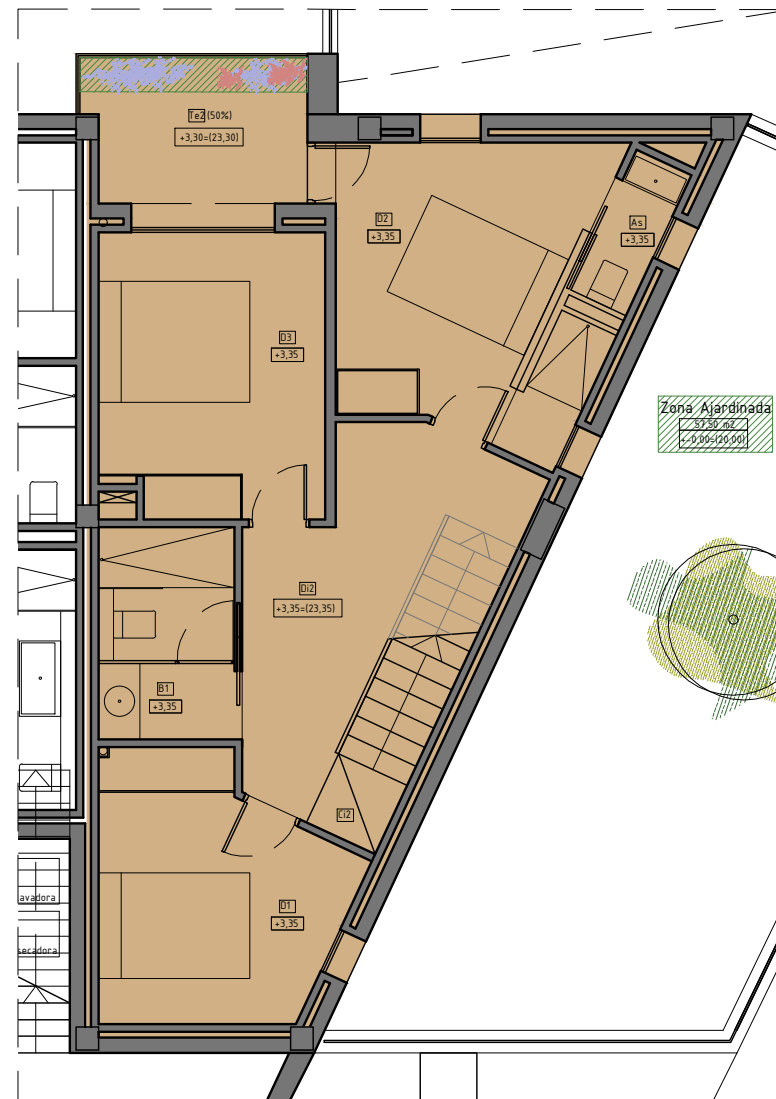


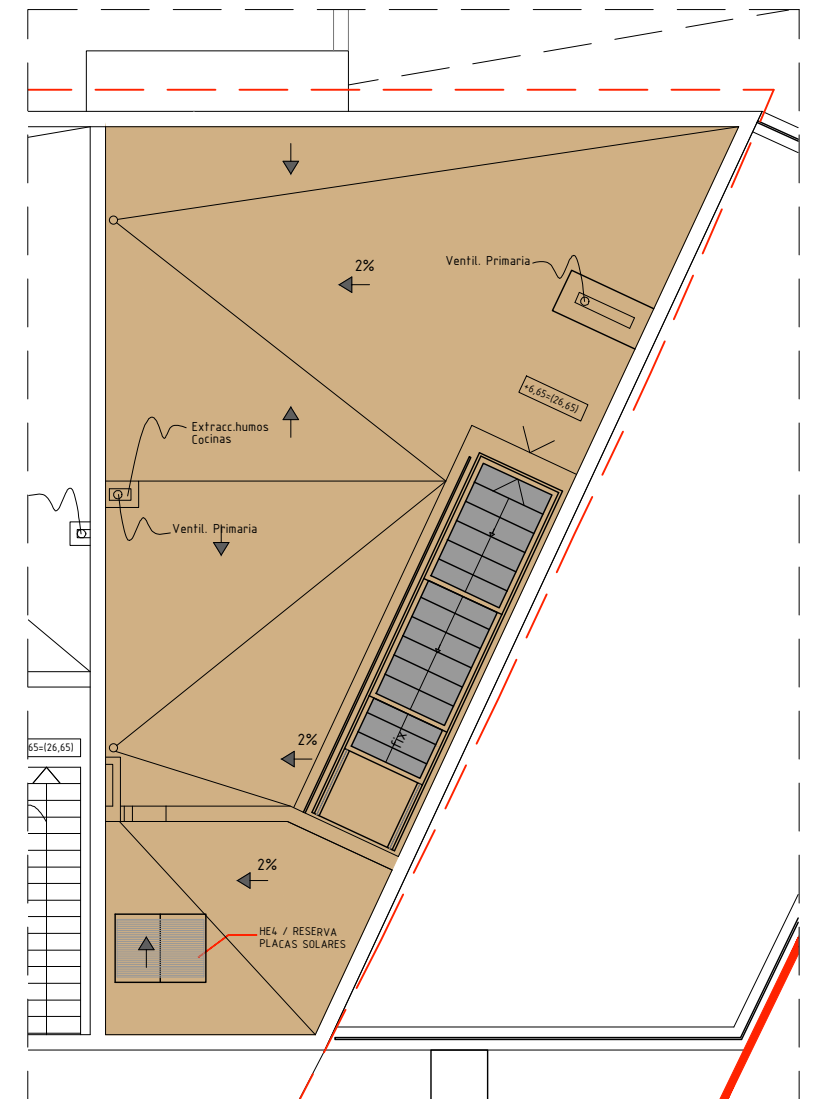
P. Baja



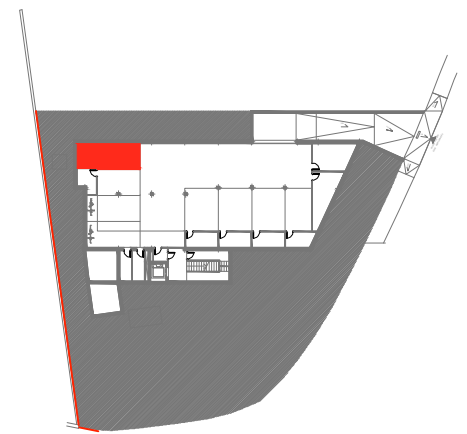
P. Sótano



P. Piso



P. Cubierta



VIVIENDA 1º A		6 PLAZAS HABITABLES
TOTAL SUP. ÚTIL VIVIENDA	113,82 m2	
TOTAL SUP. CONSTRUIDA	145,88 m2	
Sup. Terraza PB (Norte)	18,57 m2	
Sup. Jardín PB (Este)	57,47 m2	
Sup. Terraza- Balcón PP (Norte)	6,04 m2	
Sup. Cubierta uso privado	66,98 m2	
Aparcamiento PLAZA 8	13,98 m2	
Trastero Tr 8	5,96 m2	