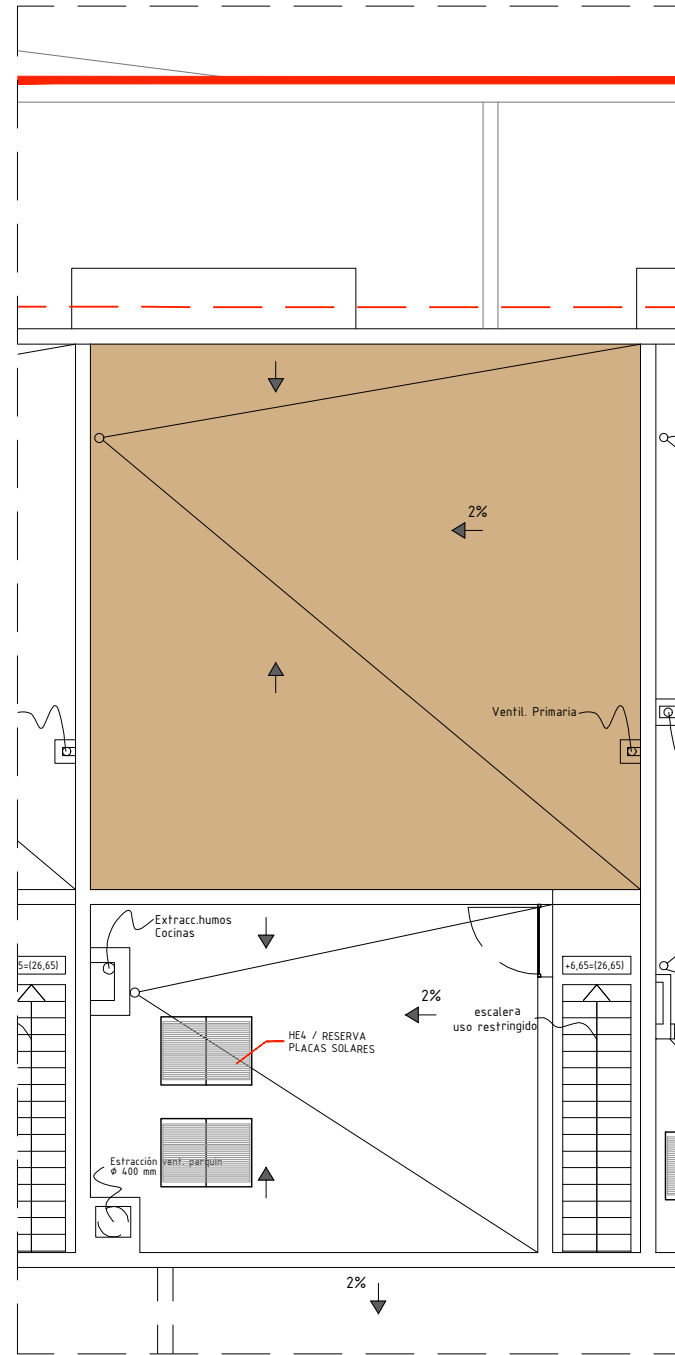
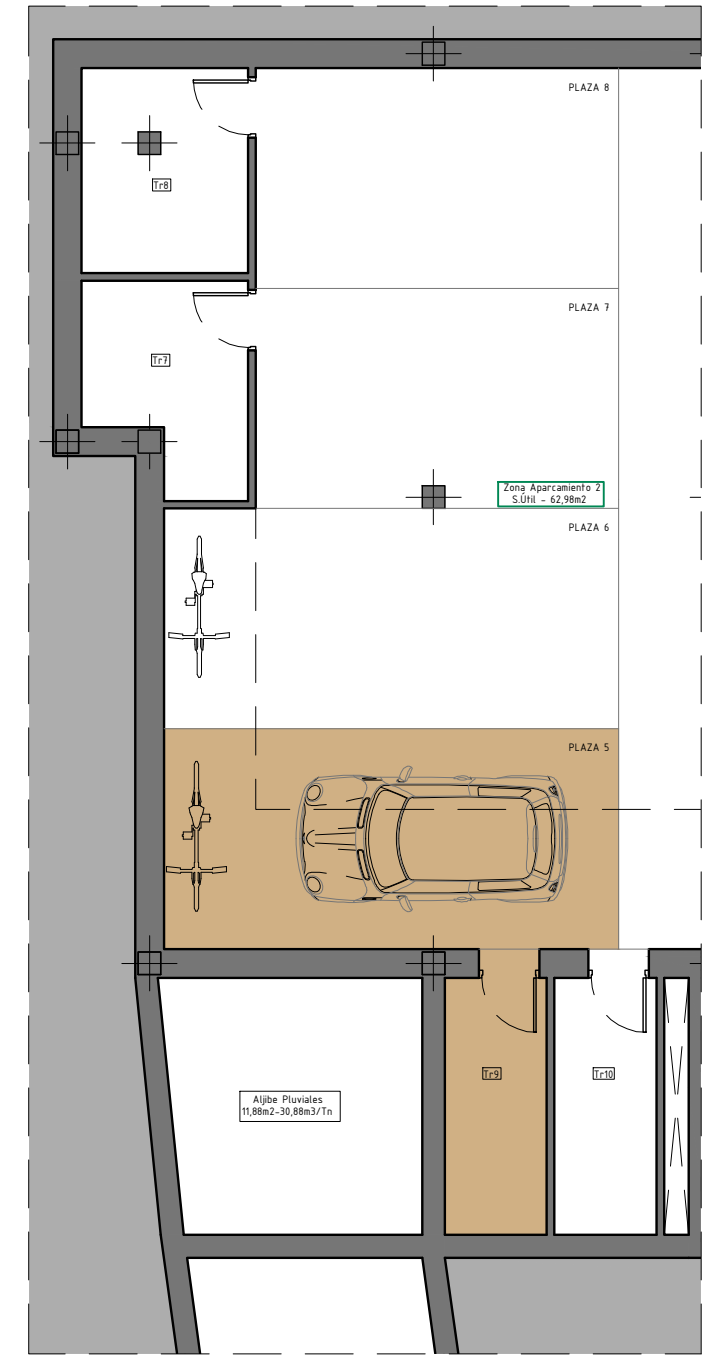


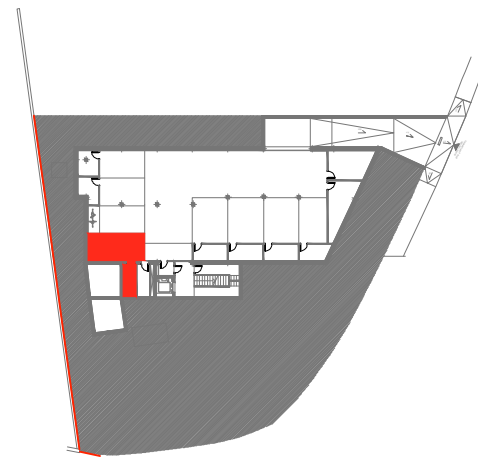
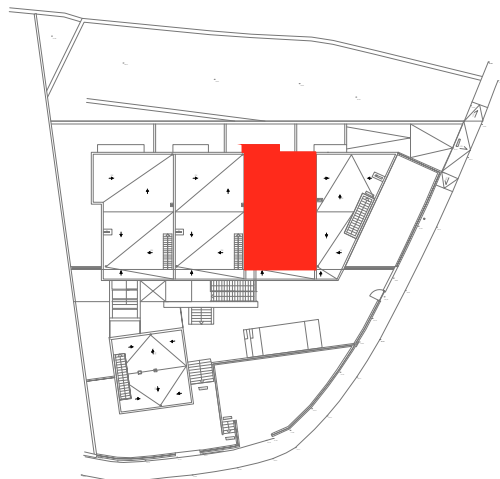
P. Piso



P. Cubierta



P. Sótano



VIVIENDA 2º A		4 PLAZAS HABITABLES
TOTAL SUP. ÚTIL VIVIENDA	65,46 m2	
TOTAL SUP. CONSTRUIDA	92,42 m2	
Sup. Terraza-Lavadero (sur)	9,45 m2	
Sup. Terraza- Balcón (Norte)	7,02 m2	
Sup. Cubierta uso privativo	52,45 m2	
Aparcamiento PLAZA 5	17,51 m2	
Trastero Tr 9	4,59 m2	