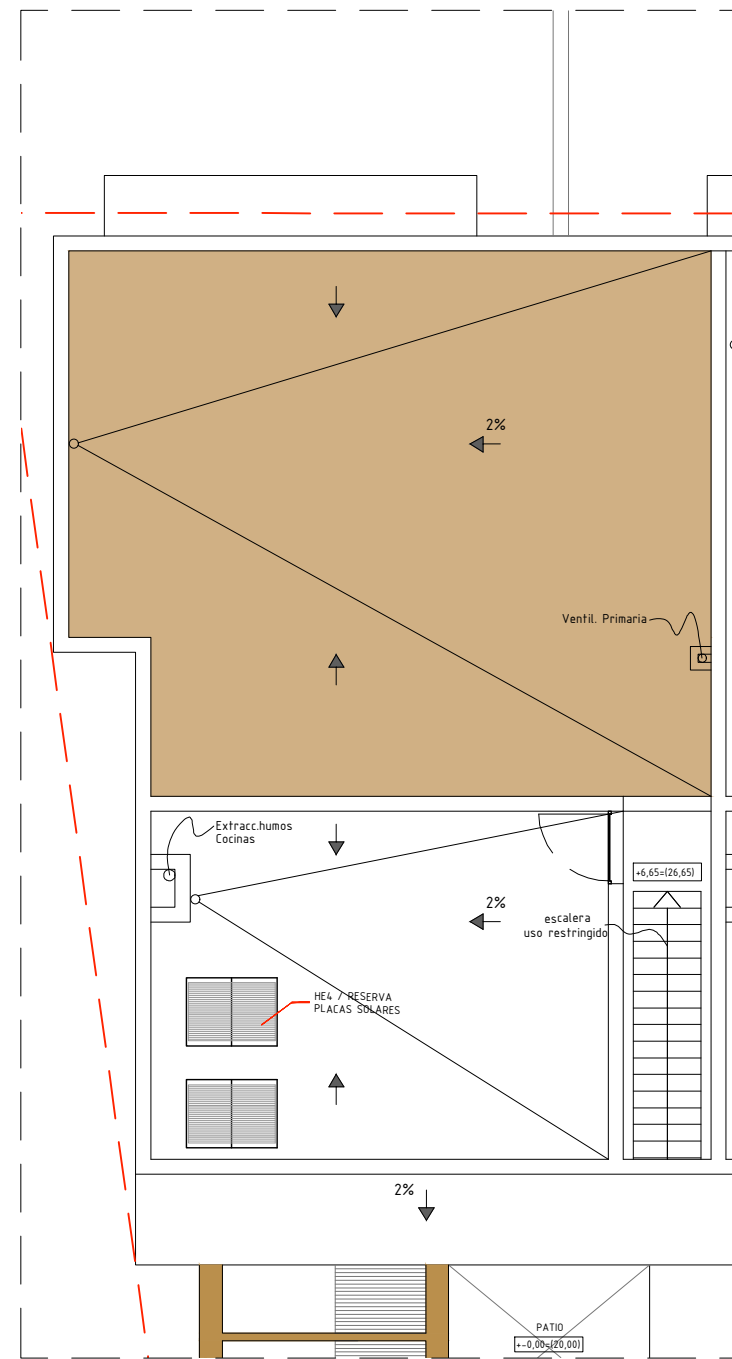
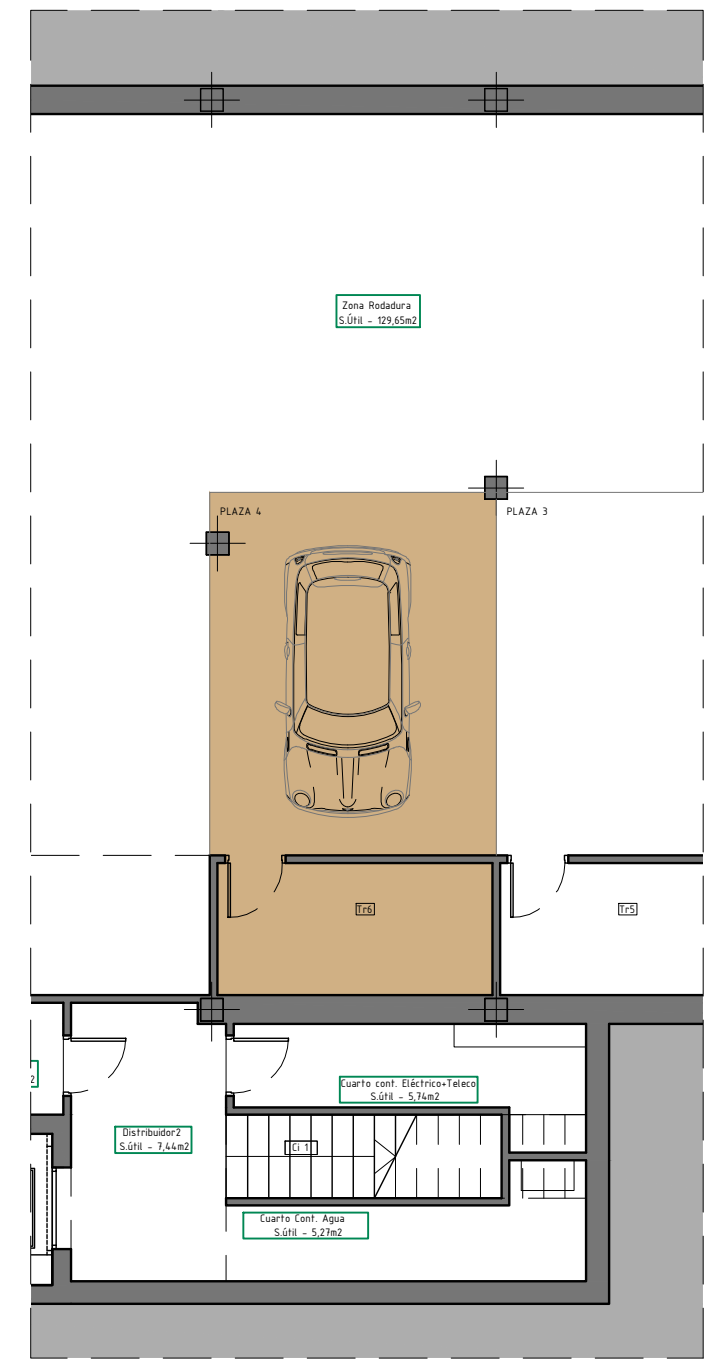


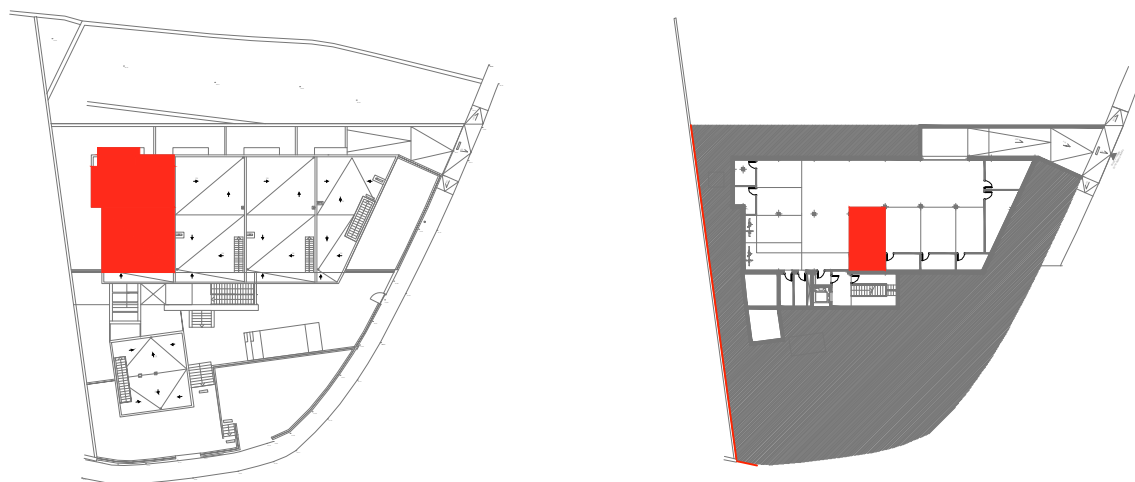
P. Piso



P. Cubierta



P. Sótano



VIVIENDA 2º C		
TOTAL SUP. ÚTIL VIVIENDA	69,67 m²	4 PLAZAS HABITABLES
TOTAL SUP. CONSTRUIDA	100,19 m²	
Sup. Terraza-Lavadero (sur)	9,45 m²	
Sup. Terraza- Balcón (Norte)	8,36 m²	
Sup. Cubierta uso privativo	58,94 m²	
Aparcamiento PLAZA 4	18,18 m²	
Trastero Tr 6	6,37 m²	