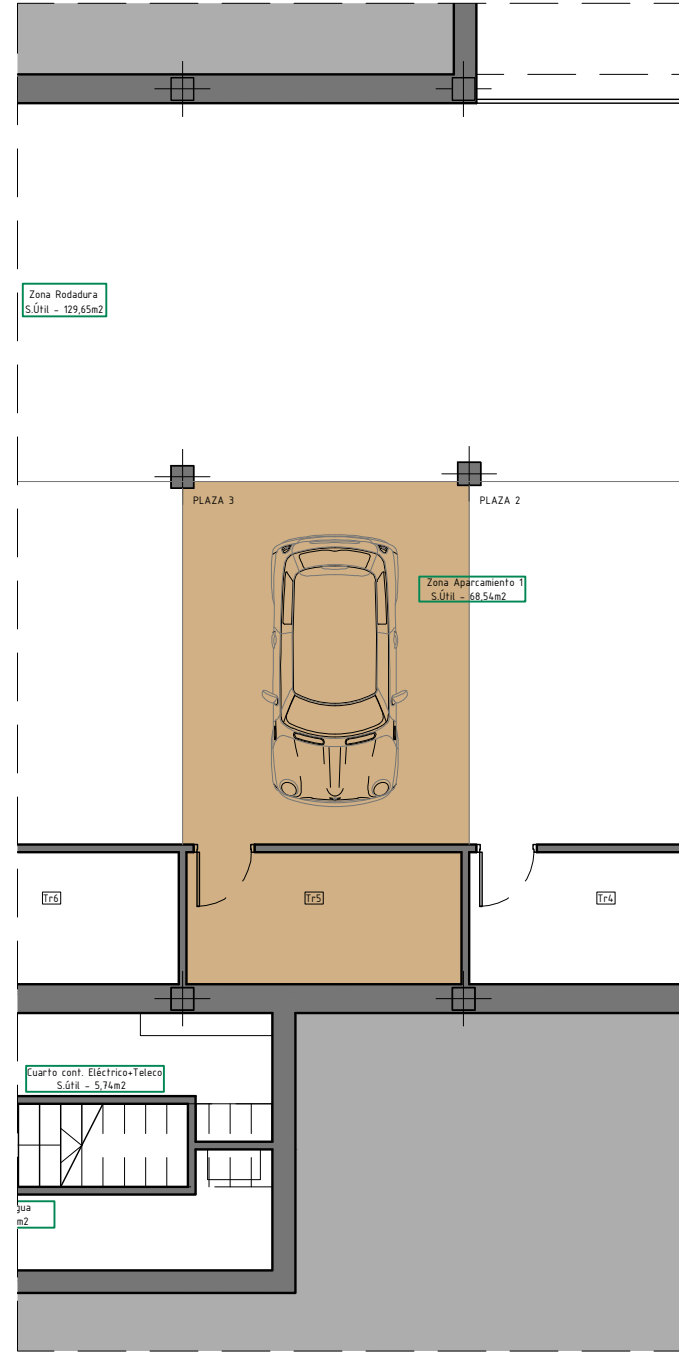
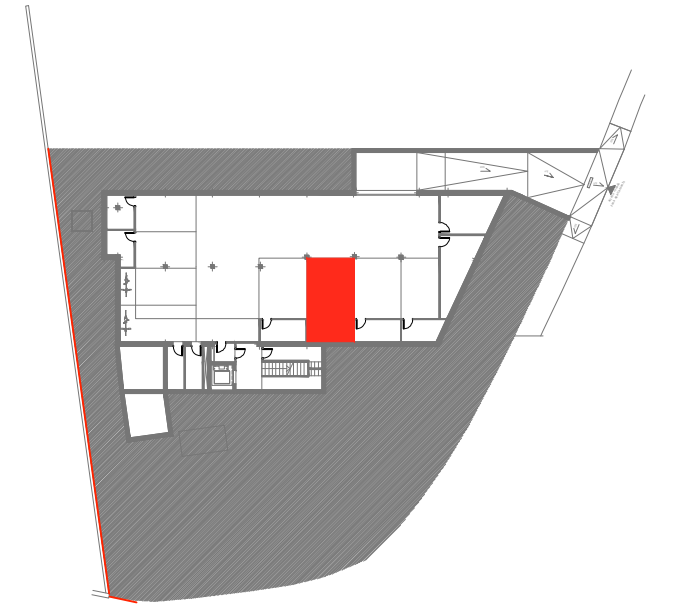
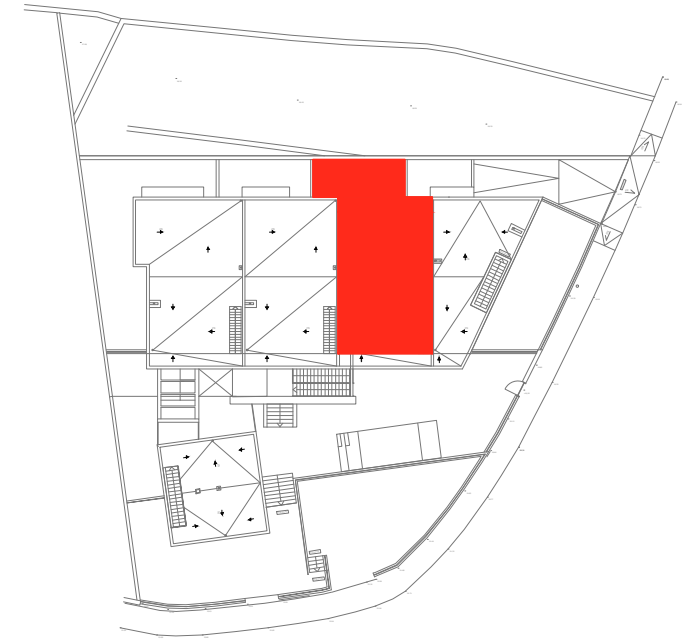


P. Baja



P. Sótano



VIVIENDA 1º B

TOTAL SUP. ÚTIL VIVIENDA 65,46 m2

TOTAL SUP. CONSTRUIDA 92,42 m2

Sup. Terraza-Lavadero (sur) 9,45 m2

Sup. Terraza (Norte) 25,68 m2

Aparcamiento PLAZA 3 18,19 m2

Trastero Tr 5 6,37 m2

4 PLAZAS HABITABLES