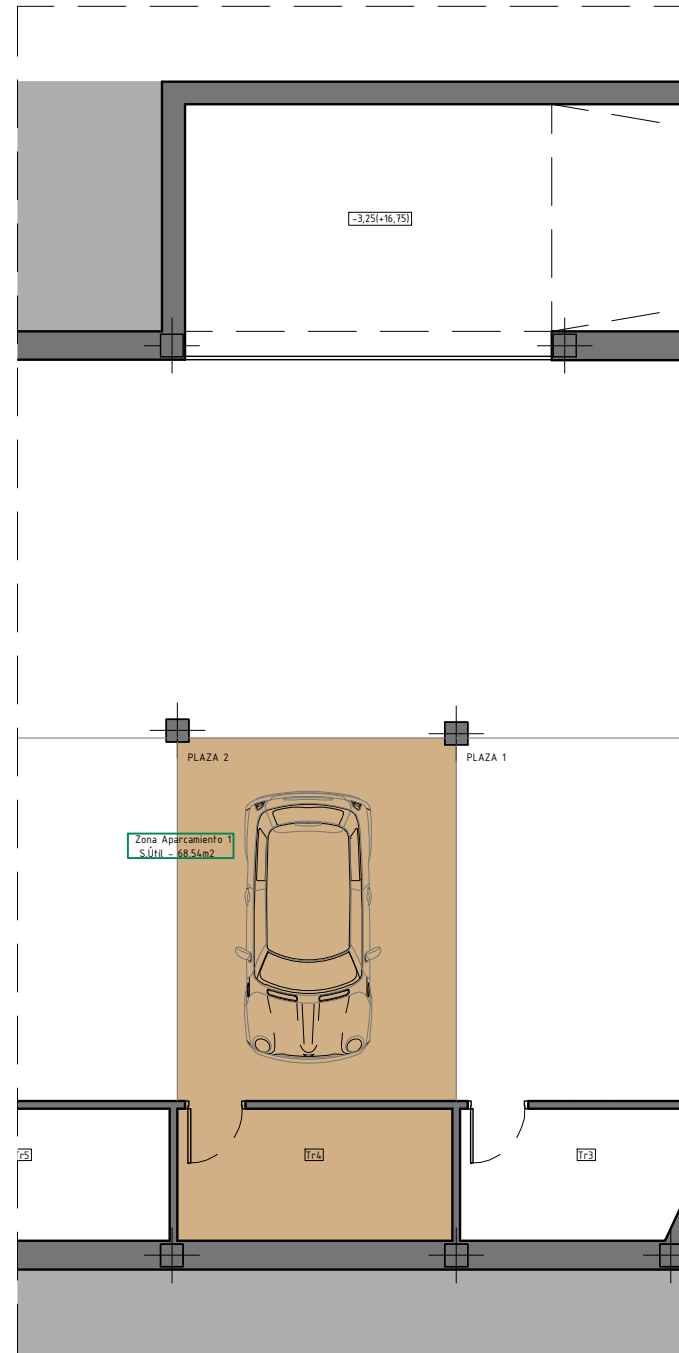
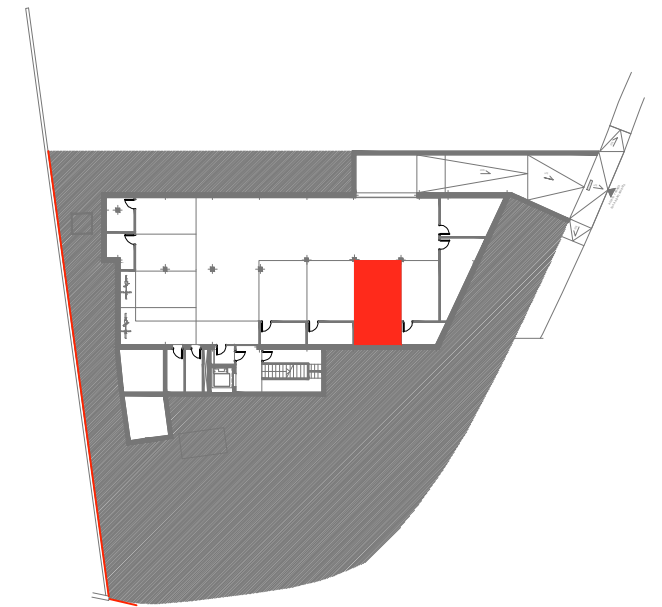
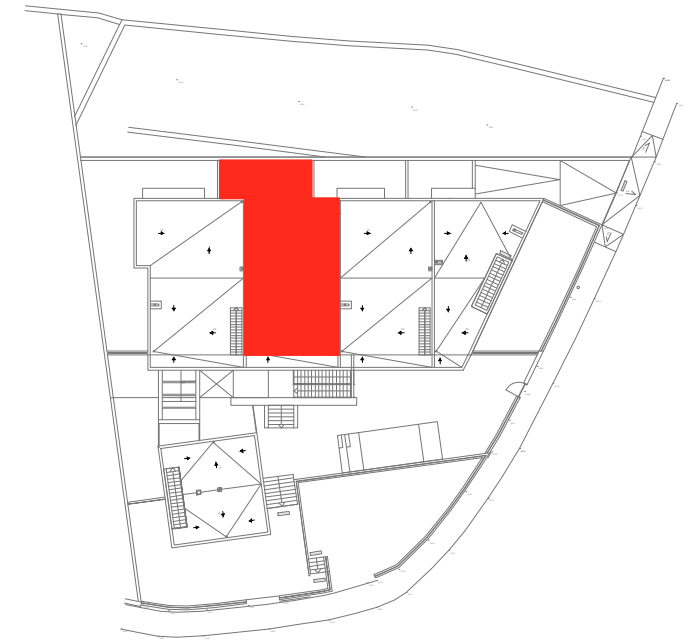


P. Baja



P. Sótano



VIVIENDA 19 C

TOTAL SUP. ÚTIL VIVIENDA 65,79 m²

TOTAL SUP. CONSTRUIDA 92,42 m²

Sup. Terraza-Lavadero (sur) 9,45 m²

Sup. Terraza (Norte) 25,68 m²

Aparcamiento PLAZA 2 17,69 m²

Trastero Tr 4 6,37 m²

4 PLAZAS HABITABLES