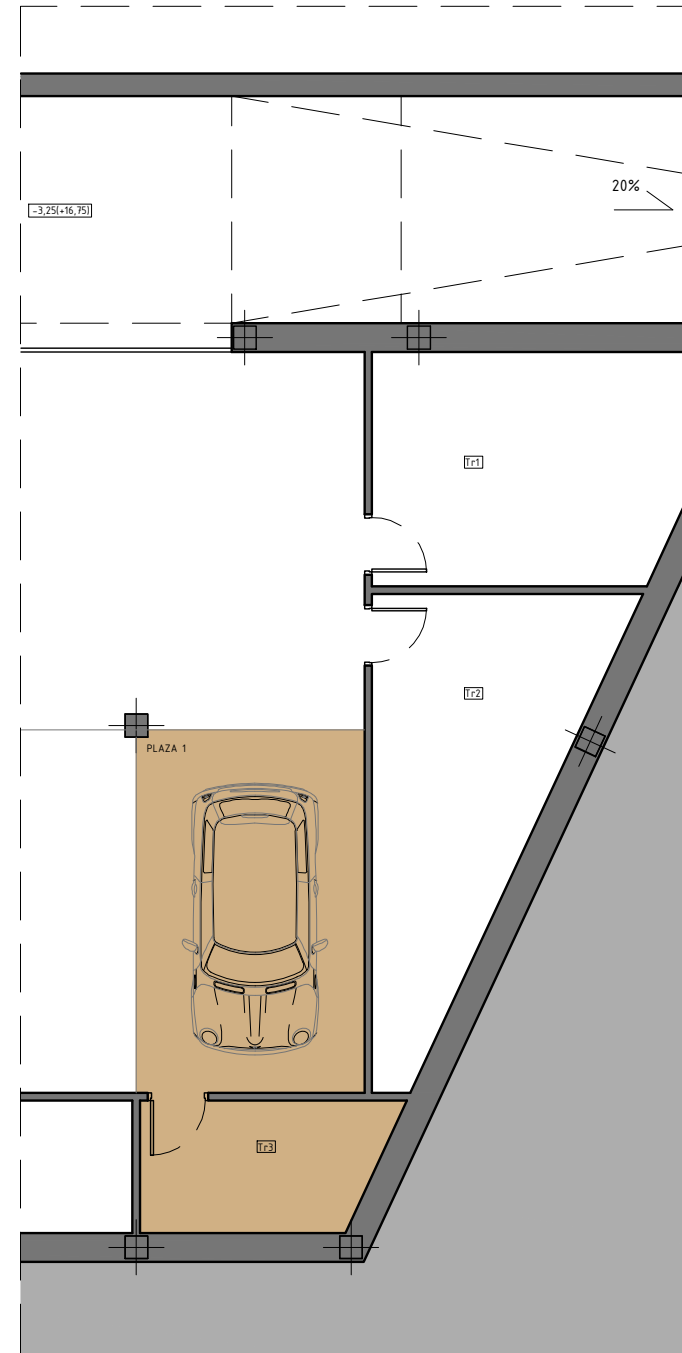
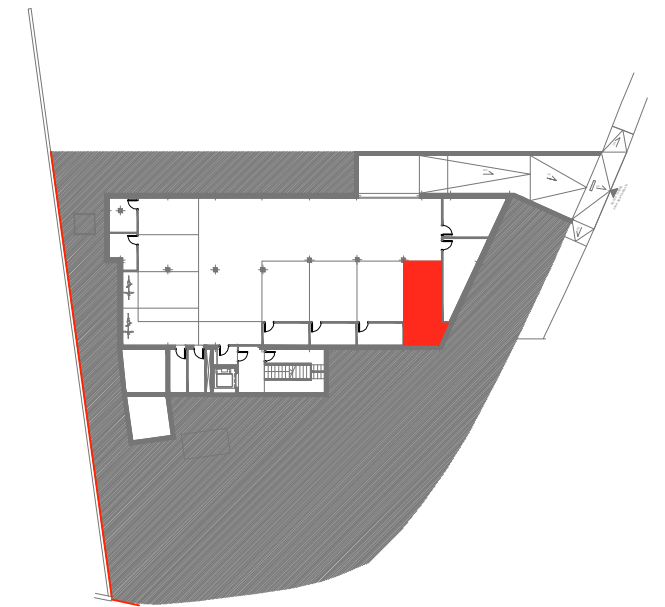
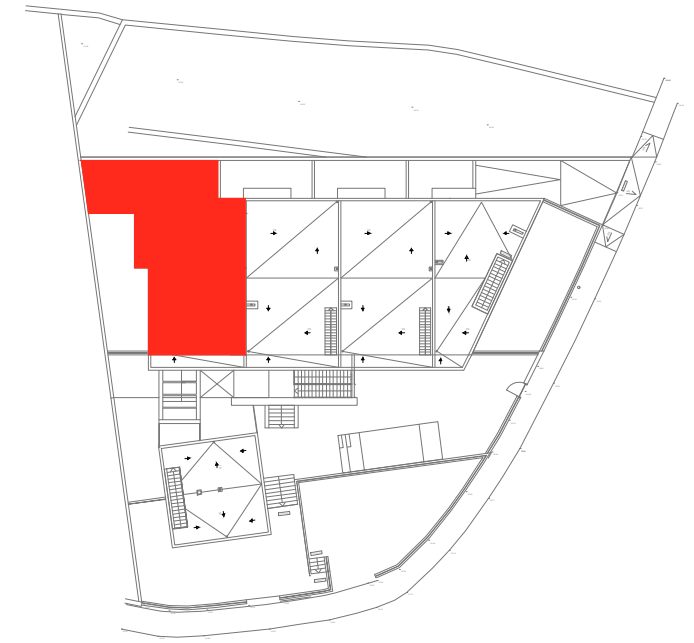


P. Baja



P. Sótano



VIVIENDA 1º D		4 PLAZAS HABITABLES
TOTAL SUP. ÚTIL VIVIENDA	69,67 m <sup>2</sup>	
TOTAL SUP. CONSTRUIDA	100,19 m <sup>2</sup>	
Sup. Terraza-Lavadero (sur)	9,45 m <sup>2</sup>	
Sup. Terraza Pavim. (Norte)	21,58 m <sup>2</sup>	
Sup. Jardín Privado (Norte)	20,26 m <sup>2</sup>	
Aparcamiento PLAZA 1	14,48 m <sup>2</sup>	
Trastero Tr 3	5,46 m <sup>2</sup>	